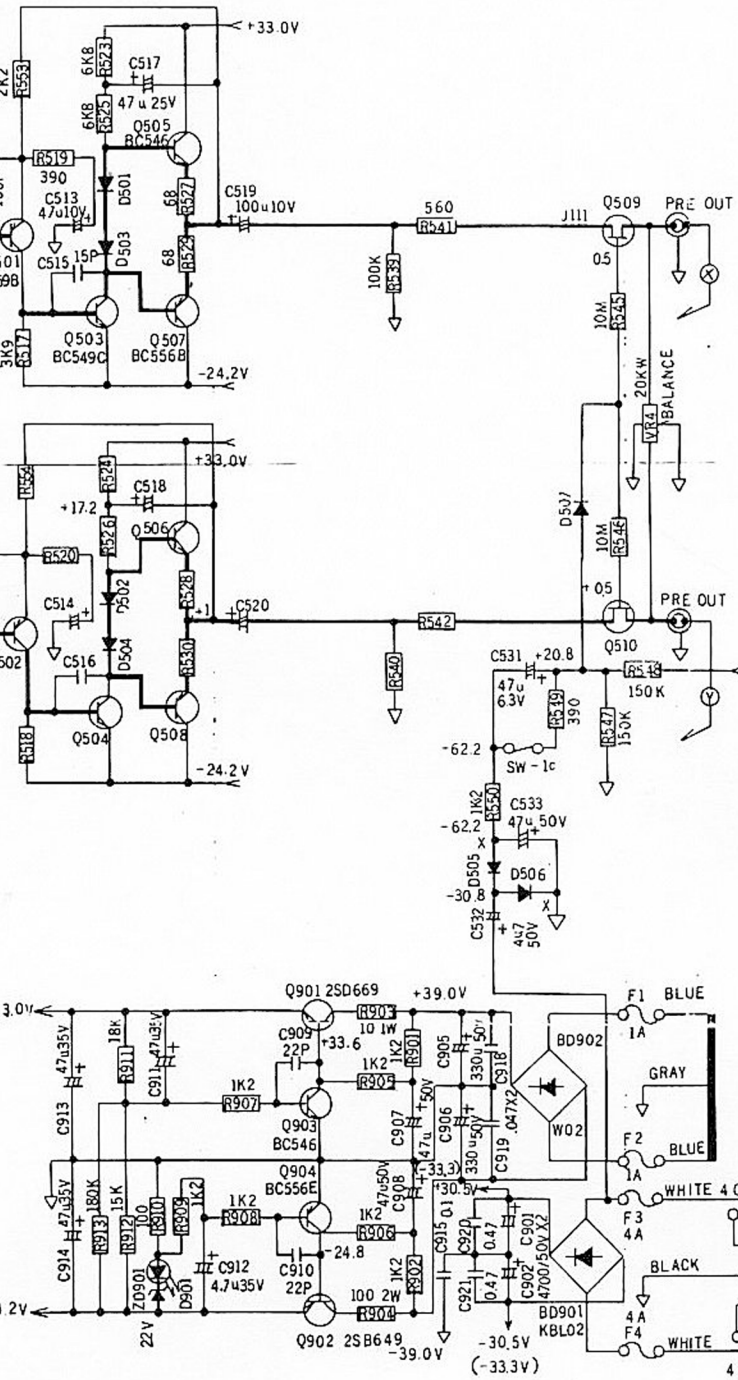


CHANGE
 All C407 C408 A
 极性变更, 为否



NOTES 1

- 1 ALL RESISTORS ARE 1/4W ±5% CARBON UNLESS OTHERWISE SPECIFIED
- 2 ALL DIODES ARE IN4148 UNLESS OTHERWISE SPECIFIED
- 3 CAPACITANCE ARE IN μF UNLESS OTHERWISE SPECIFIED
- 4 X MEANS RESISTOR WITH CERAMIC TUBE STAND UP ON THE PCB
- 5 □□ MEANS MOUNT ON COMMON HEAT SINK
- 6 X X MEANS R653 R654 WILL BE SHORTED AFTER IDLE CURRENT ALIGNMENT
- 7 THE VOLTAGE SHOWN AT EACH POINTS ARE TESTED ON STATIC CONDITION
- 8 ALL SW ARE AT OFF POSITION. TURBO SW AT 4 OHM POSITION
- 9 () MEANS TURBO SW AT 8 OHM POSITION.

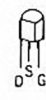
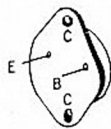
NOTES 2:

- 1 SW-1 a b c : POWER SW.
- 2 SW-2 a b : PHONO SW.
- 3 SW-3 a b : TUNER SW.
- 4 SW-4 a b : AUX SW.
- 5 SW-5 a b : TAPE MONITOR SW.
- 6 SW-6 a b : LOUDNESS SW.
- 7 SW-7 : MONO.
- 8 SW-8 a b : SOFT CLIPPING
- 9 SW-9 a b : TURBO SW.

NOTE 4: FUSES RATING

- | | |
|---------------|------------|
| UL, CA | SD, FL, DM |
| SI, HK | UK, AS, IL |
| F1 F2 1A/250V | T1A/250V |
| F3 F4 4A/250V | T4A/250V |

NOTES 3:



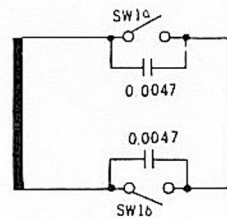
2N3055
MJ2955

2SB669
2SD469

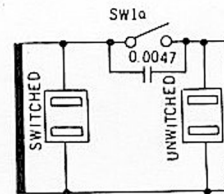
J1.1

BC546
BC549
BC556
BC559

2SC2602



240V/50Hz: FOR VERSION B, D.
220V/50Hz: FOR VERSION C, C1



120V, 60Hz: FOR VERSION A, A1.
220V/50Hz: FOR VERSION C2

1190x
2276

Ample
3120

A11C407C408A 极性变更 涛环	DIM	SCALE	DATE	SCHEMATIC DIAGRAM
	IN		73.2.16	
	mm			
DAHSEN ELECTRONIC INDUSTRIES, LTD				
DRAWN	CHECKED	DESIGNED	APPROVED	D 9801534